



MICHAEL EVERETT & Co

... A Moving Experience

8 AVENUE COURT

THE AVENUE, TADWORTH

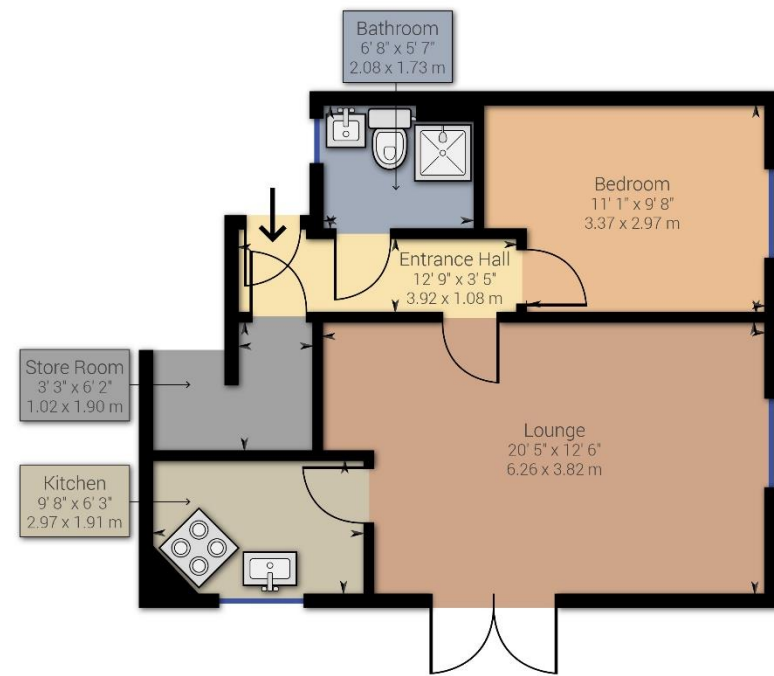
KT20 5BG

An immaculately presented ground floor apartment in a highly popular retirement development located on the edge of heathland close to Tadworth village shops and station.

The flat has been extensively modernised and features a communal entrance serving just 2 flats, a good size hall with large walk in storage cupboard, a 20'8 x 12'7 living room with doors out onto a private patio, a modern kitchen with integrated appliances, one double bedroom and a modern bathroom.

Outside there are beautifully maintained areas of communal garden and a private garage.

ASKING PRICE £299,950



While every attempt has been made to ensure accuracy, all measurements are approximate, not to scale. This floor plan is for illustrative purpose only and should be used as such by any prospective tenant or purchaser.

Powered by Giraffe360



Michael Everett & Co. Regency House 61 Walton Street Walton On The Hill Surrey KT20 7RZ
Tel: 01737 814877 Email: walton@michael-everett.co.uk www.michael-everett.co.uk

Disclaimer: These details are for guidance only and reference to any fixtures and fittings, including photographs, does not guarantee that the said items are included in the sale. The floorplan is an illustration and is therefore for layout guidance only and is not drawn to scale, unless stated. Whilst every care is taken in the preparation of this plan, please check all dimensions and shapes before making any decisions reliant upon them.